

Scotts Moor Flatwoods Sanctuary

Another post on a blog mentioned “We were trying to follow the route of the [Coast to Coast Connector](#), a bike path under development from Titusville to St. Peterburg, when we stumbled across a vast swath of public land that neither of us had heard about. Surprisingly, it’s right off US 1, but there are no signs to direct you to its trailheads.”

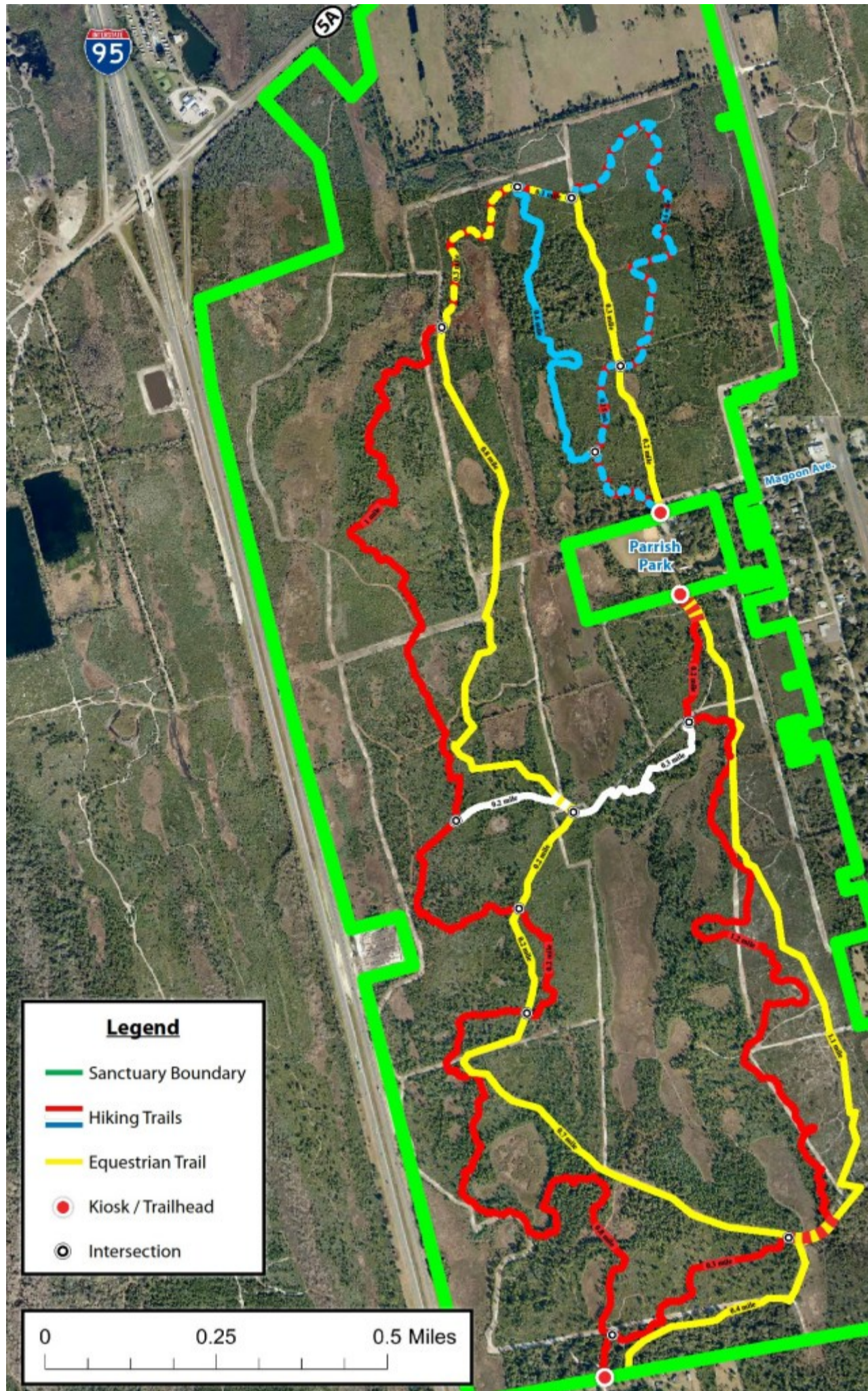
They tried to enter from the west: “We found the western side first, as the C2C tunnels straight into it off Aurantia Rd, right under I-95. Our attempts to get into the sanctuary from Rose Marie Dr didn’t work.”

They then finally said: “We looked all around Interstate 95 around the exit for SR 5A. - we’ll be back later this year to fill you in on all the trail details.”

We (Pam and I) will try International Ave, google maps shows a fence that looks like we can get in:



Just to the right of the fence looks like an entrance for foot traffic!



The very bottom of this proposed trail map shows a red dot, future Kiosk will likely be placed there.

We will drive to the nearest address on international drive:

5296 International Ave, Mims, Florida looks like just over an hour drive, will leave by 8:00am.

<https://goo.gl/maps/g5ByaJ3LKXHZ5PNK7>